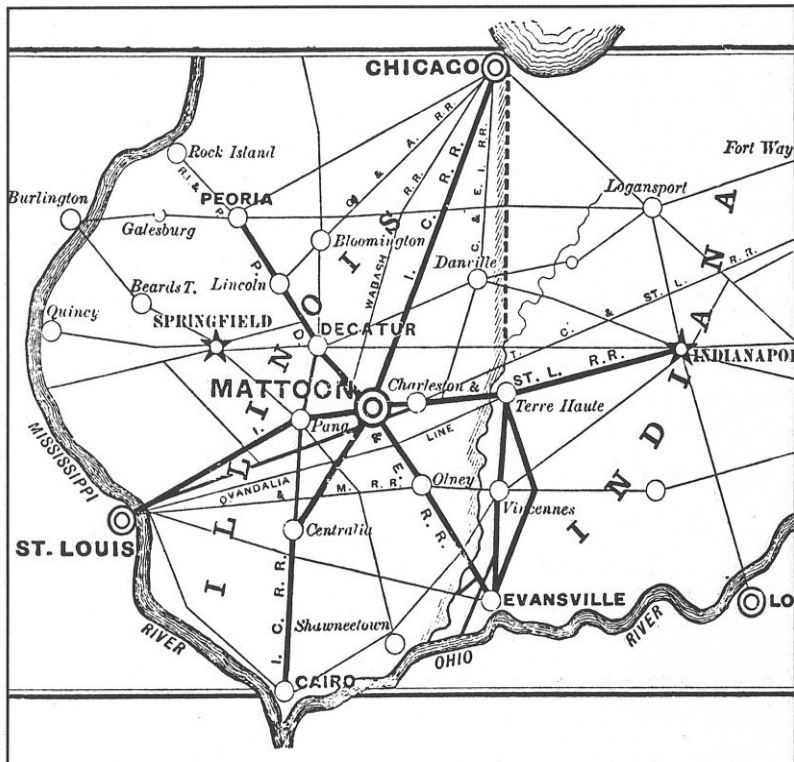


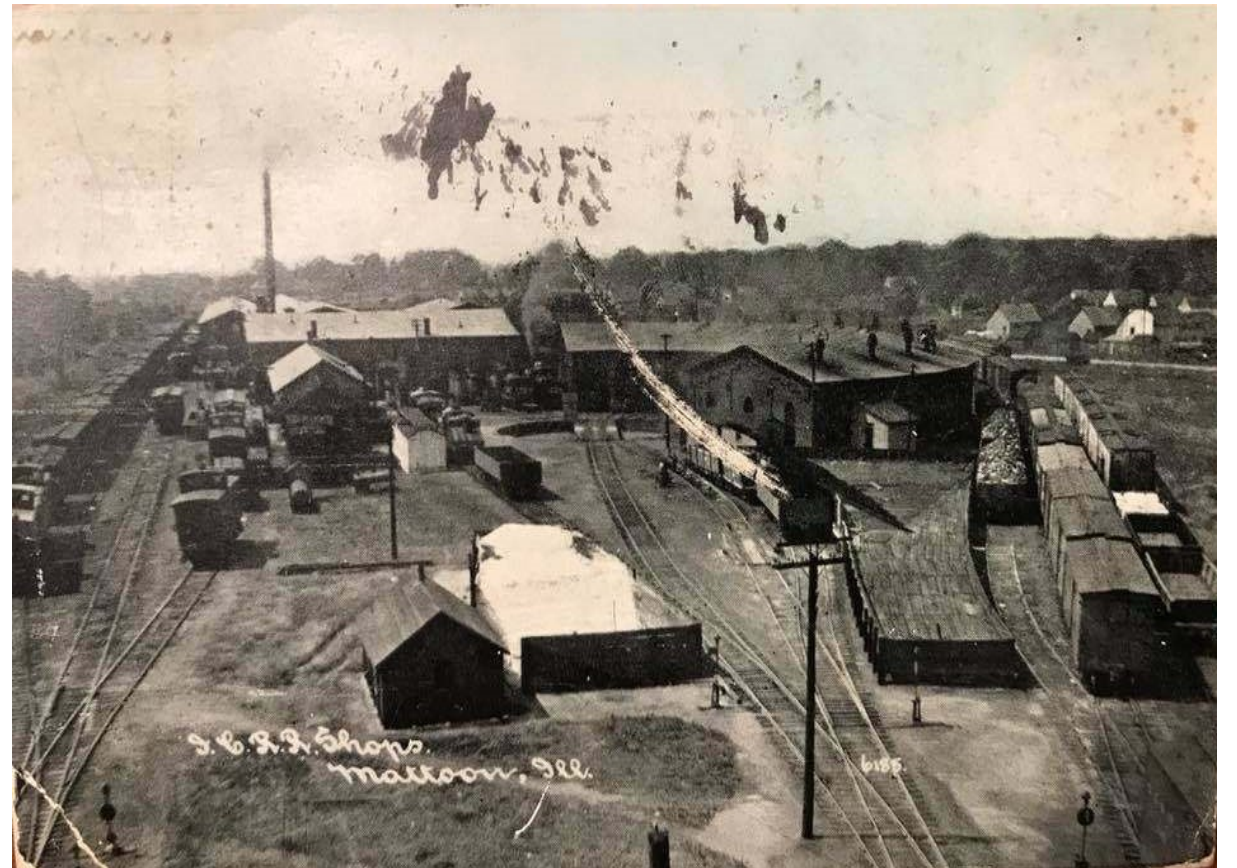
PEORIA, DECATUR & EVANSVILLE



With the junction of the ICRR and the Indianapolis & St. Louis, Mattoon was perfectly poised to support a third railroad crossing the eastern part of the State diagonally.

The Peoria, Decatur & Evansville was formed in 1878 as a result of merging several small, struggling lines, of which the Peoria, Decatur and Mattoon was one.

Mattoon was about midway between Peoria and Evansville so the PD&E established a roundhouse and shops just west of 27th Street in Mattoon. The city of Mattoon awarded the PD&E \$50,000 through a bond referendum to locate here.



The PD&E also built a passenger depot on 21st Street between Marshall and Lafayette.



PD&E locomotive #15 was built in 1880 by the Brooks Locomotive Works, Dunkirk, N.Y



The PD&E built Karl Tower at Broadway and 32nd Street to guard the crossing with the Big 4.

By 1900 the PD&E was also bankrupt and sold at public auction to the Illinois Central. ICRR took over operations on August 1, 1900.