

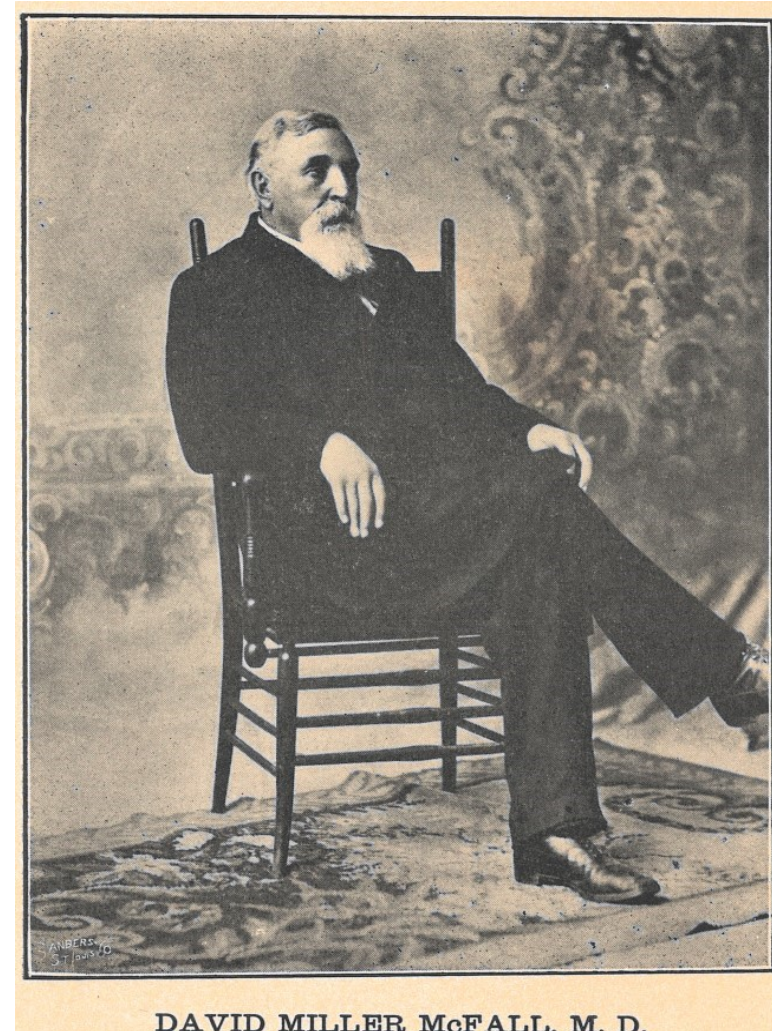
# MEMORIAL METHODIST HOSPITAL

Dr. David M. McFall a well-established and respected physician came to Mattoon and began his medical practice in 1862. He was concerned that the nearest hospitals were in Decatur and Champaign. Operations were almost never attempted in Mattoon, except amputations which were generally done in a physician's office.

The closest thing to a medical facility was a building in Central Park called the "morgue". The building consisted of two rooms, one which served as a crude surgery room and the other where bodies of people killed in accidents were taken.

To that end, in July of 1901, Dr. McFall and his wife Helen deeded 320 acres of farm ground, valued at \$50,000, to the Methodist Episcopal Church of Mattoon for the express purpose of establishing a hospital.

They made the gift in honor of their two sons who had both passed away, Howard on November 10, 1899 and Leslie on June 21, 1901.

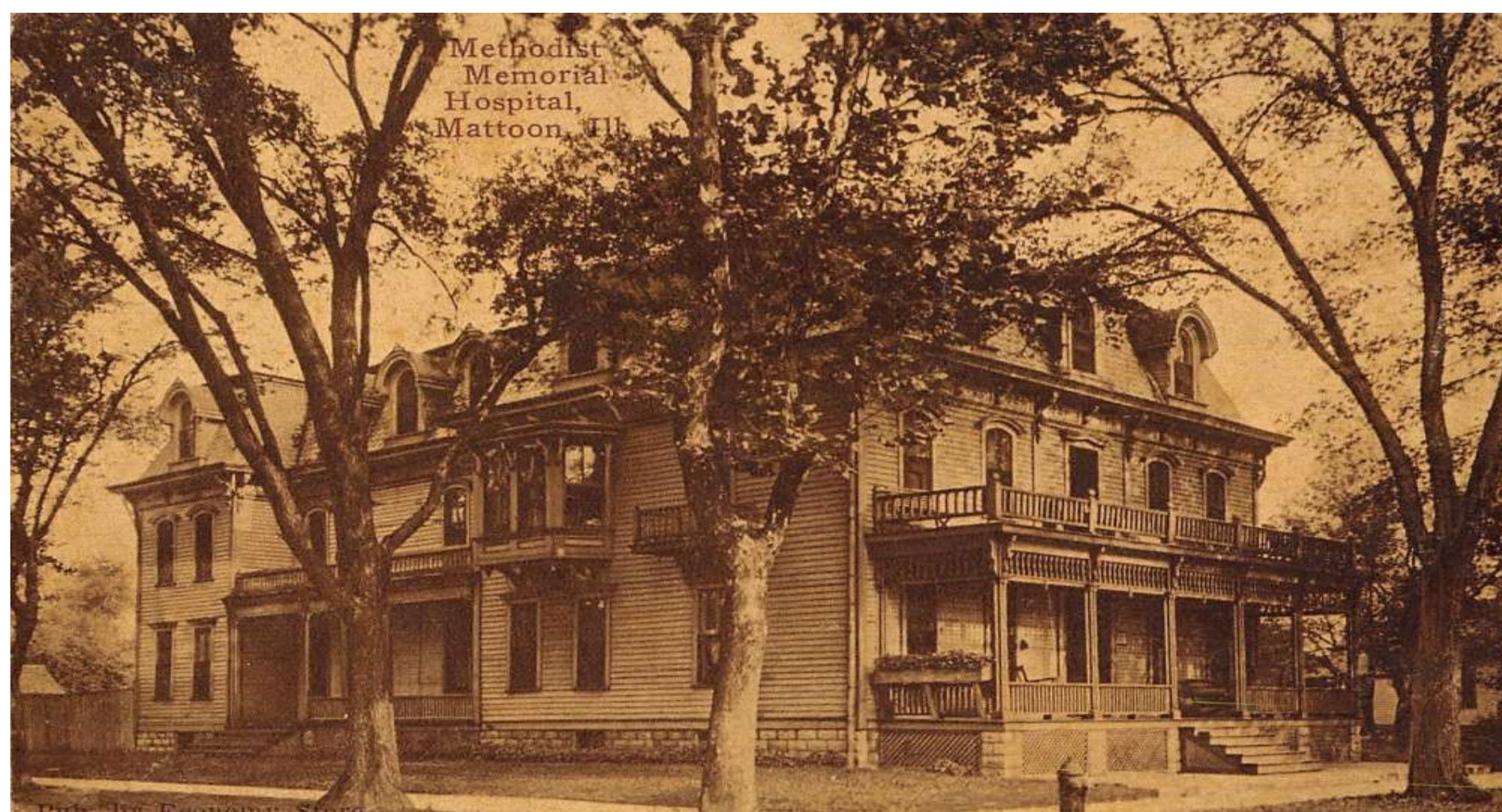


DAVID MILLER McFALL, M. D.

Shortly after that, Mrs. Mary Taylor Morris made a like contribution of 50 acres in Lafayette Township.

On October 22, 1902, the Secretary of State issued a Charter to Memorial Methodist Hospital of Mattoon. The Methodist Episcopal Church Trustees in turn deeded the parcels of land to the Hospital Board.

On October 15, 1904, Mr. and Mrs. William Taylor donated 80 acres of farm land to the Board. This brought the holdings of the Hospital Board to \$75,000 and it was deemed sufficient to begin a search for a satisfactory Hospital site.



The Hospital Board purchased property from J. S. King at 21<sup>st</sup> and Richmond Avenue, on August 1, 1905. King had been operating the three story, 25 room building as a hotel.

On October 14, 1905, the Smith Ellis Construction Company was awarded a contract to remodel the structure. The renovations produced two first floor wards, six private rooms on the second floor, an operating room and an anaesthetizing room as well as bathrooms and other spaces.

The Hospital Board financed the renovations and many local residents and businesses contributed to furnish medical equipment.



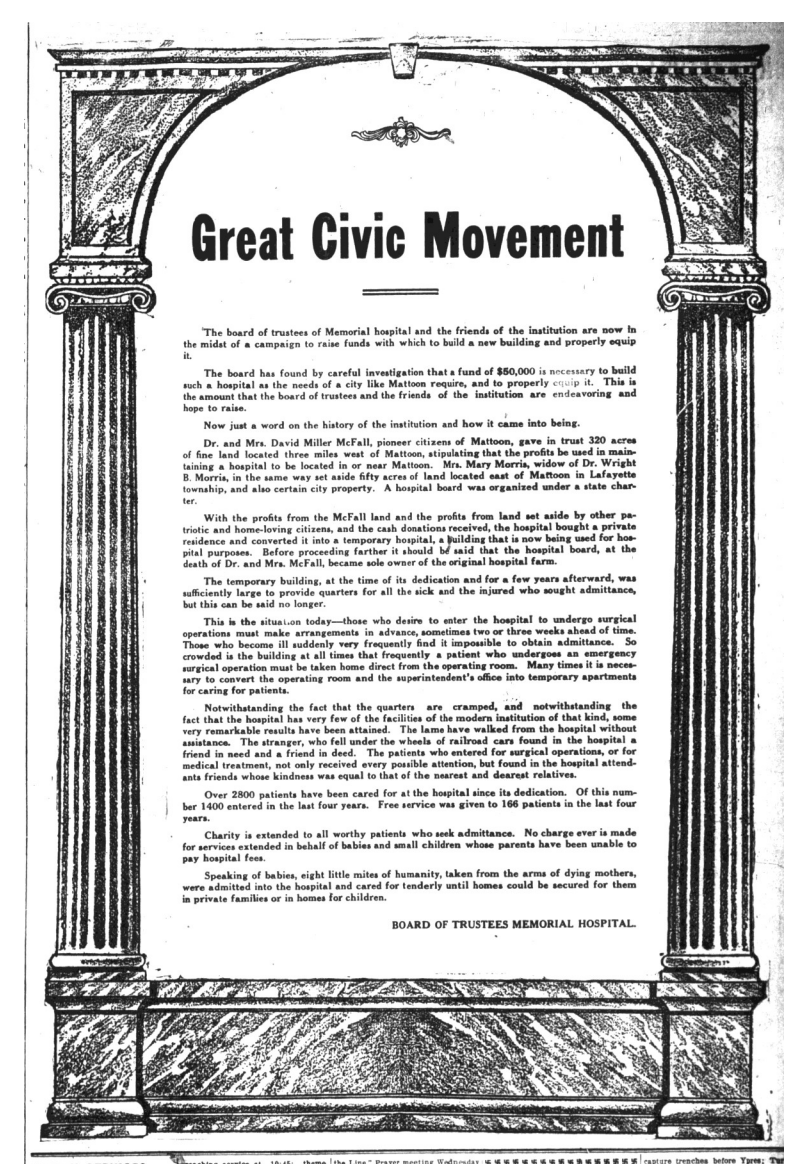
Memorial Methodist Hospital was formally dedicated and opened on March 15, 1906. The Gibler Band furnished music for the dedication.



# MATTOON MEMORIAL HOSPITAL

By 1915 it had become clear that the original building was inadequate for the growing population and increasingly complex medical procedures. On December 4, 1915 a fund drive was kicked off with the goal to raise \$50,000 for a new hospital building.

Several sites were considered for the new hospital and ultimately it was decided to stay at the present site. The new hospital would be constructed north of the existing building and when it was completed, the original frame structure would be razed. The Hospital Board owned three lots and acquired three more for current and future needs.



On April 26, 1916 a contract was let to J. S. Ozee & Sons, of Mattoon to construct a modern three story brick building with capacity for 53 beds, and two operating rooms as well as a separate emergency operating room. The cornerstone was laid on June 10, 1916. Construction progressed rapidly and on February 14, 1917 patients were moved into the new building. This was very timely, because in a few short weeks, the new hospital would be put to the test as it dealt with an influx of victims of the May 26 tornado, that caused mass devastation and injury.

Between the years 1909 and 1934 the hospital also conducted a Hospital School of Professional Nursing and shortly after the completion of the hospital, a residence for the student nurses was constructed north of the hospital.



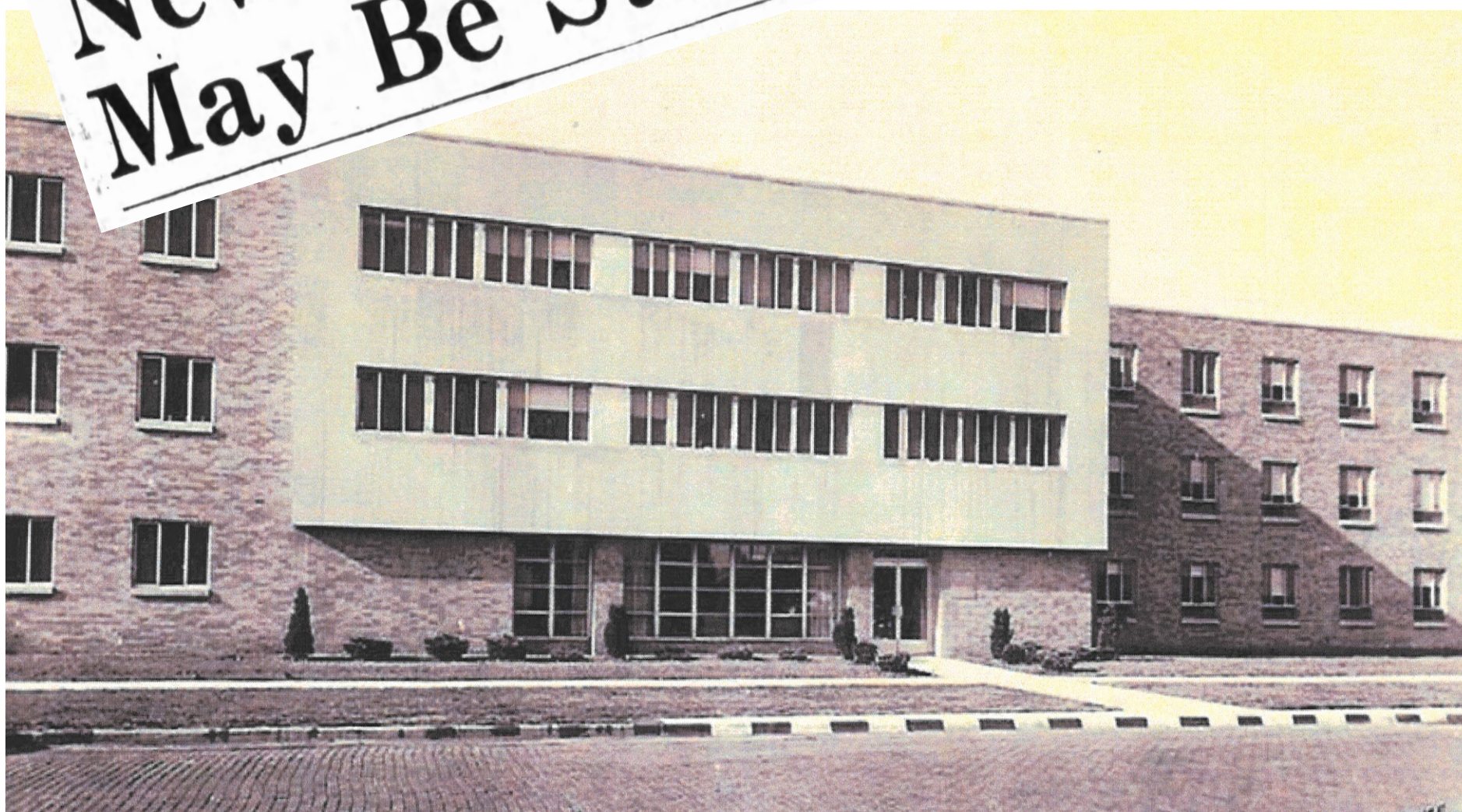
NURSES HOME



CLASS OF 1920



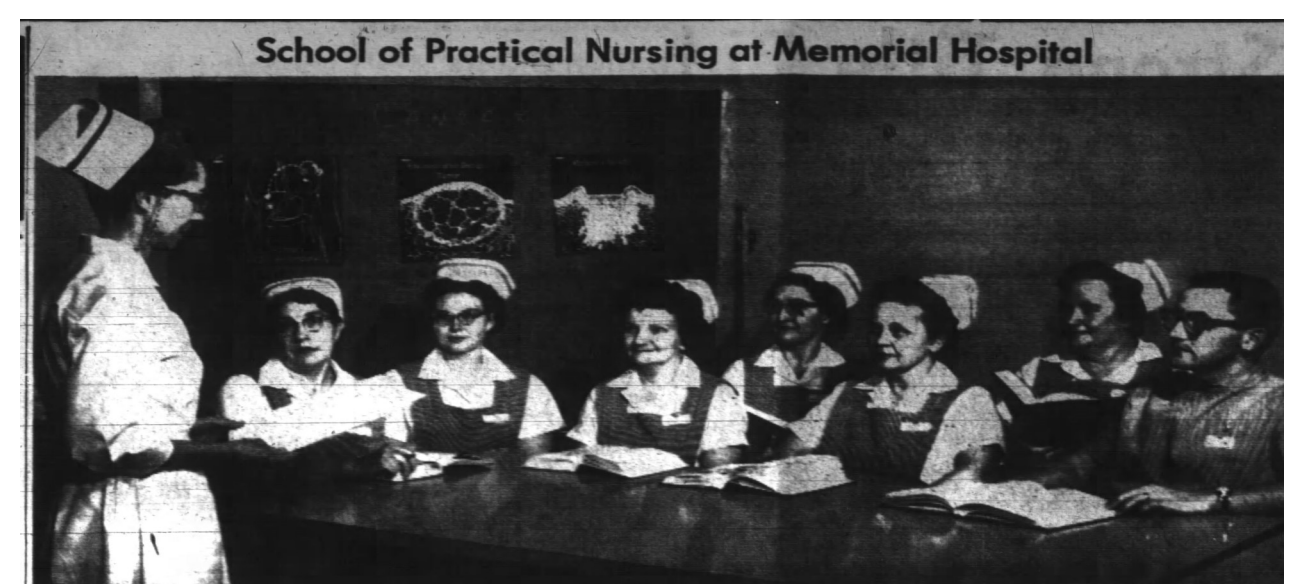
In order to address the growing need for improved services and space, a campaign to raise funds and develop an expansion plan for the hospital began in 1952. The Memorial Hospital District of Coles County was formed to facilitate financial needs and control of the Hospital passed to the District on April 1, 1953.



Following a successful fundraising effort and bond issue, ground was broken in July of 1953 for a new wing on the north side of the existing hospital which would raise the bed count to 102 and add many new, modern services to the hospital.

The new wing was dedicated on May 29, 1955 and almost immediately, a \$100,000 renovation of the original structure was undertaken.

In 1957 the Mattoon School of Practical Nursing was launched in conjunction with Memorial Hospital and would continue until it was incorporated into the Lake Land College curriculum when the college was formed.

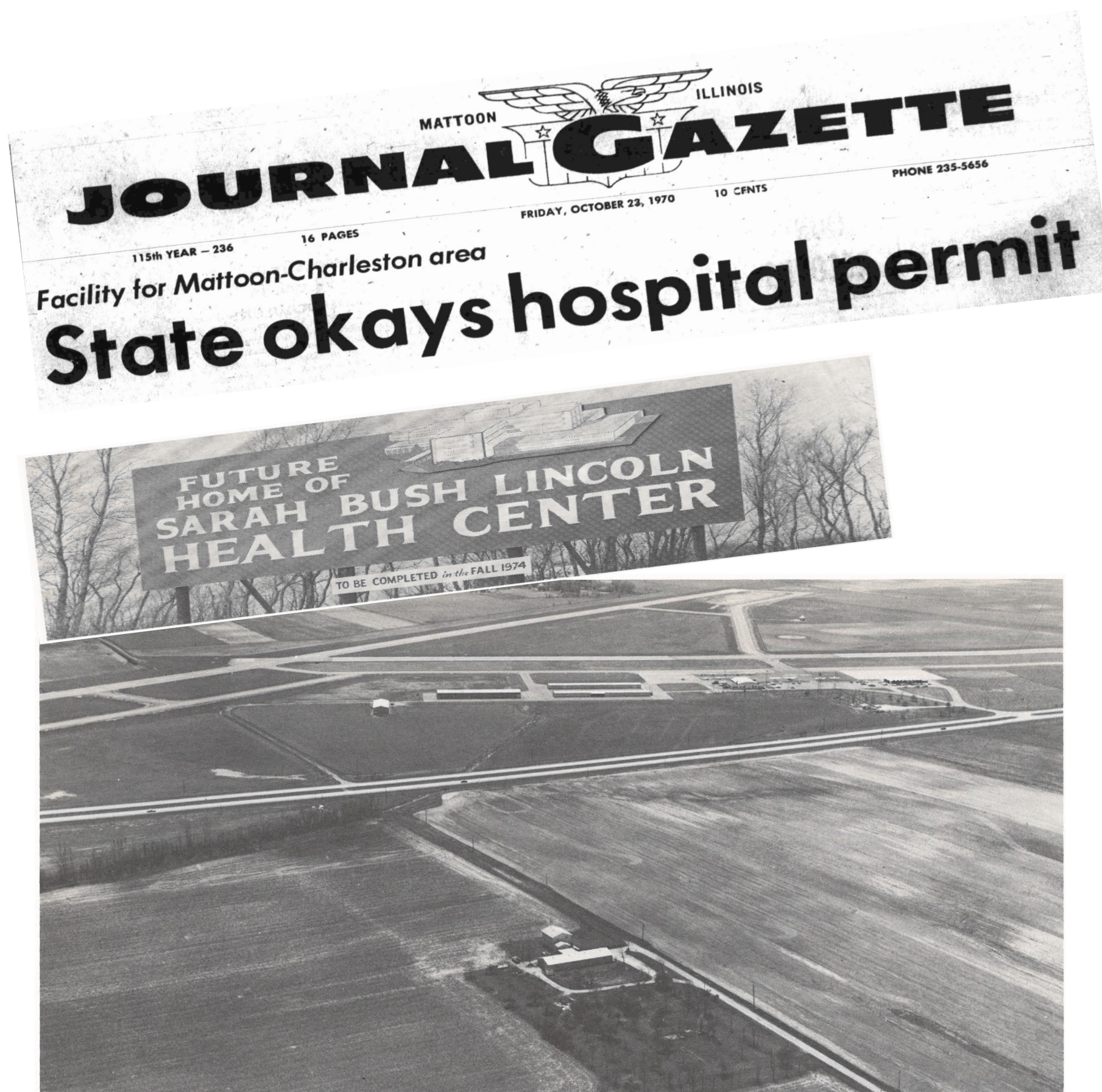


# SARAH BUSH LINCOLN HEALTH CENTER

By the late 1960's patient needs and medical advances were taxing the resources of Memorial Hospital. The Hospital Board contracted the consulting firm of Jensen, Halstead and Rummel to conduct a feasibility study of options for the future.

In January 1969 the firm presented their findings to the hospital board. It estimated that it would take \$6.8 million to renovate and upgrade the existing hospital. It proposed, instead, a new \$7 million hospital with 200 beds and combining Memorial and Charleston Community Hospital into one entity. At that time Memorial Hospital had 114 beds and Charleston Community Hospital had 65.

The Charleston-Mattoon Area Medical Planning Council was formed to pursue options and was spurred along by an August 1969 report from the Illinois Department of Public Health which found a combined 103 beds from both hospitals did not conform to current standards.



In 1970 the State of Illinois granted a corporate charter to the Area E-7 Hospital Board and on October 14, 1970 a permit was granted for the construction of a hospital. Prior to the October date a fundraising committee had already formed and a fund raising campaign had begun with a goal of \$2.5 million, which was necessary for the Board to raise to secure State and Federal funding

In 1971 the Board officially named the proposed hospital: Sarah Bush Lincoln Health Center. By December of 1971 the fundraising goal had been reached and in 1972 a 75 acre site along Illinois Route 16 was selected.

1973 saw the advertisement for bids, a contract awarded while construction began in August.

That same year saw the voters approve a measure to merge the assets of Mattoon Memorial Hospital with the Sarah Bush Lincoln Health Center. Charleston would subsequently pass a similar measure in March of 1976.



Mother's Day, May 10, 1977 heralded the grand opening of the Sarah Bush Lincoln Health Center.

The new, modern facility quickly attracted new doctors and specialties to the area, including:

Neurology

Cardiology

Orthopedics

Vascular Surgery



In 1989 the Regional Cancer Center was opened, which was the first of many additions and expansions that were planned for the future.

1992 saw the adoption of a Master Facility Plan which encompassed a \$25.5 million expansion and renovation project. Included in the Plan was a new four-story Medical Office Pavilion. Other key upgrades to the emergency room, critical care unit, cardiac rehabilitation and outpatient surgery were included. The Master Facility Plan would entail 115,000 square feet of new construction and 50,000 square feet of renovated space. The project started in 1993, the first phase opened in 1994 with completion of the final phase in 1995.



Photo by Dave Foppey  
Earth was turned Tuesday for a \$25.5 million expansion project at SBLHC.



The completion of this project was just the first in an ongoing series of ambitious building programs to expand and improve health care to the East Central Illinois region.

2004 brought about the Medical Office Pavilion 2.

2010 heralded the Prairie Pavilion 1 medical office building, followed in 2011 by Prairie Pavilion 2. The Center for Healthy Living opened in 2014 to help people regain strength following injury or surgery and live healthier lifestyles

2011 also saw the adoption of an updated \$48 million Master Facility Plan to continue to upgrade and enhance the facility.

In 2013, patient care was transitioned to all private rooms, part of the Master Facility Plan.

The new, free-standing Regional Cancer Center opened in 2016 and The Heart Center was dedicated in 2017.

The next project to come to completion is the new, free-standing Surgery Center on the east side of the campus.

At the end of 2019, the hospital had 145 beds, 1509 employees on campus, and welcomed 767 new babies. Total square footage of the campus complex is 627,073.

Sarah Bush Lincoln has grown from a hospital that cares for people in health crises to one that helps prevent health issues. It has grown into a regional independent health system encompassing outreach services and clinics throughout the region.

