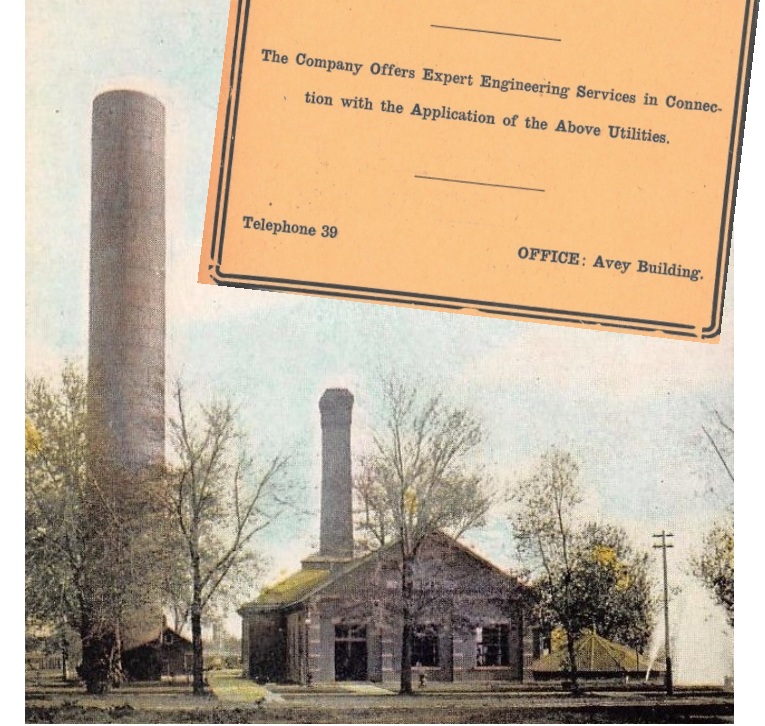
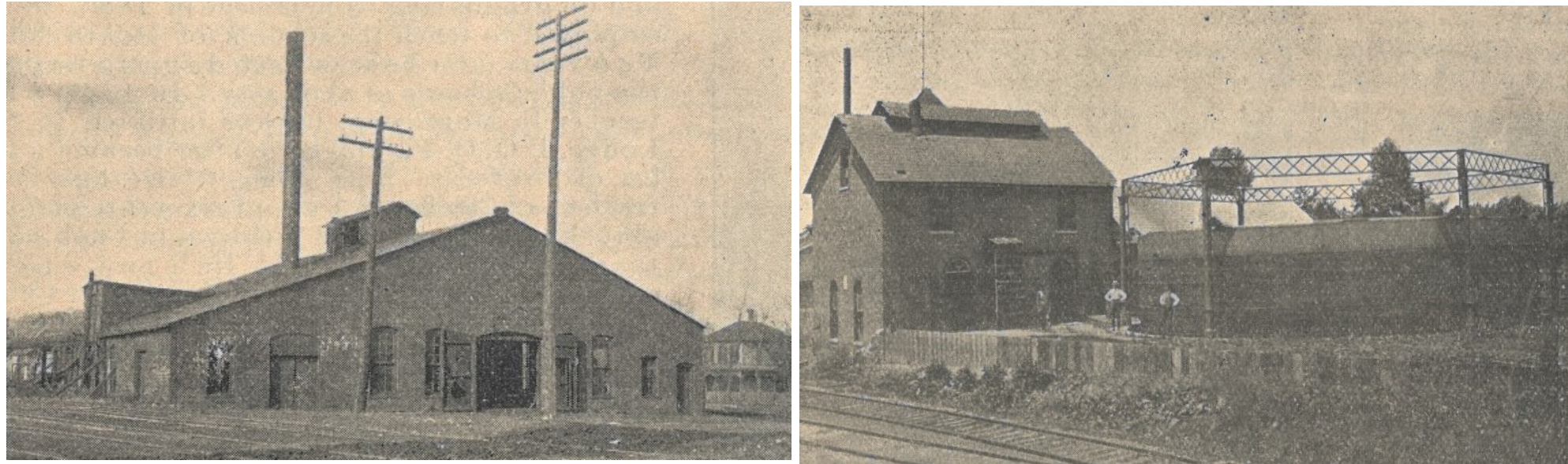
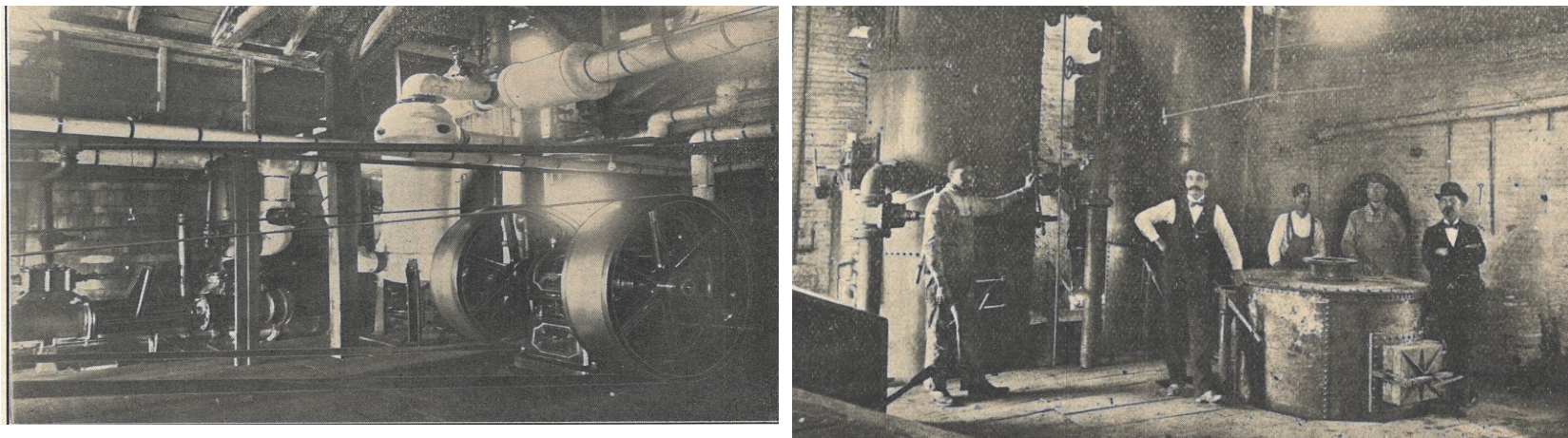


# CENTRAL ILLINOIS PUBLIC SERVICE COMPANY

The Central Illinois Public Service Company, which today is part of Ameren, began in Mattoon in 1901 as the Mattoon City Railway Company. Before 1901, the city had 3 separate lighting plants, the Mattoon Heat, Light and Power Company, the Mattoon Gas, Light and Coke Company and the City Lighting Plant. In 1901, E A Potter purchased both the Mattoon Heat, Light and Power and the Mattoon Gas, Light and Coke and rolled them together as MHLP operating under the umbrella of the Mattoon City Railway Company.



Following a bankruptcy and receivership, the company was reorganized and capitalized as The Central Illinois Public Service Company. Both lighting plants were combined and in 1912 CIPS purchased the Clearwater Water Works business.



In those early years, CIPS also furnished piped superheated hot water heat to many businesses and residences through the former MHLP heating plant. They also continued to operate the Mattoon City Railway Company.

By the early 1920's, CIPS headquartered in Mattoon was providing electricity and gas to 65 towns and villages and beginning to shed their other satellite businesses to focus on electric and gas expansion. CIPS sold the Clearwater business to the City of Mattoon Water Department in 1936. In 1927, CIPS abandoned the Streetcars but continued to run the city bus line until 1931, when it was sold to a private concern.



**TOMORROW IS THE LAST DAY OF THE**  
**Central Illinois Public Service Company's**  
**Gas Range Sale**

Most Successful  
 Attractive Prices  
 Better Stoves  
 Greater Values  
 and  
 Liberal Terms  
 Are Reasons You Should Not Miss This Last Day

**Central Illinois Public Service Company**

**WHY PAY MORE--**

You can now obtain the **LOWEST** prices on **NEW MAZDA LAMPS** with out returning Burned-Out Lamp Bulbs

The Prices of All Lamps are as Follows:

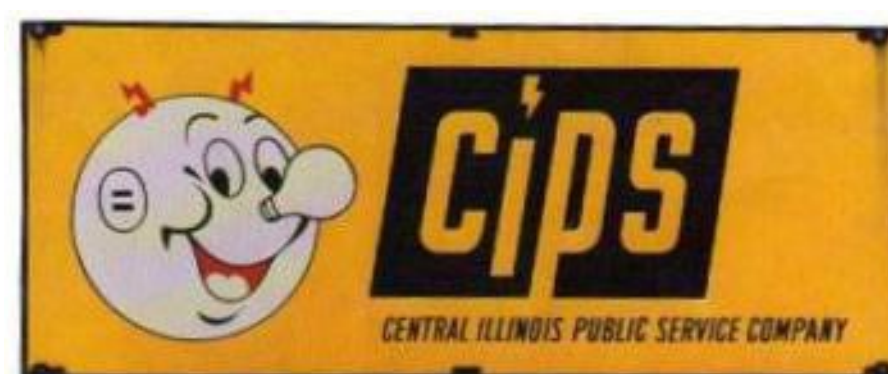
Size of Lamps	Price per Lamp	
	Regular Type	Mazda Lamps
25 watt.....	\$.26	\$.28
40 watt.....	.26	.28
60 watt.....	.34	.38
100 watt.....	.60	.66
150 watt.....	.94	1.02
250 watt.....	1.53	1.63
<b>GEM LAMPS</b>		
30 watt.....	\$.16	\$.18
60 watt.....	.16	.18
100 watt.....	.24	.27

We sell only the Highest Quality of MAZDA AND GEM LAMPS, exactly suited to the voltage of the electric service supplied to you.

**CENTRAL ILLINOIS PUBLIC SERVICE COMPANY**  
 Telephone 39 Avey Building

By 1928, CIPS had taken over all of the Avey Building. The ground floor was largely devoted to marketing appliances and services.

The Corporate offices had been moved to Springfield, Illinois in 1921, to put those offices closer to the geographic center of the company's expanding service area, as well as to be at the heart of regulatory and policy decision making. Mattoon remained the division headquarters for East Central Illinois.



In 1995, it was announced that Union Electric, based in St. Louis and CIPS would merge forming the Ameren Company.