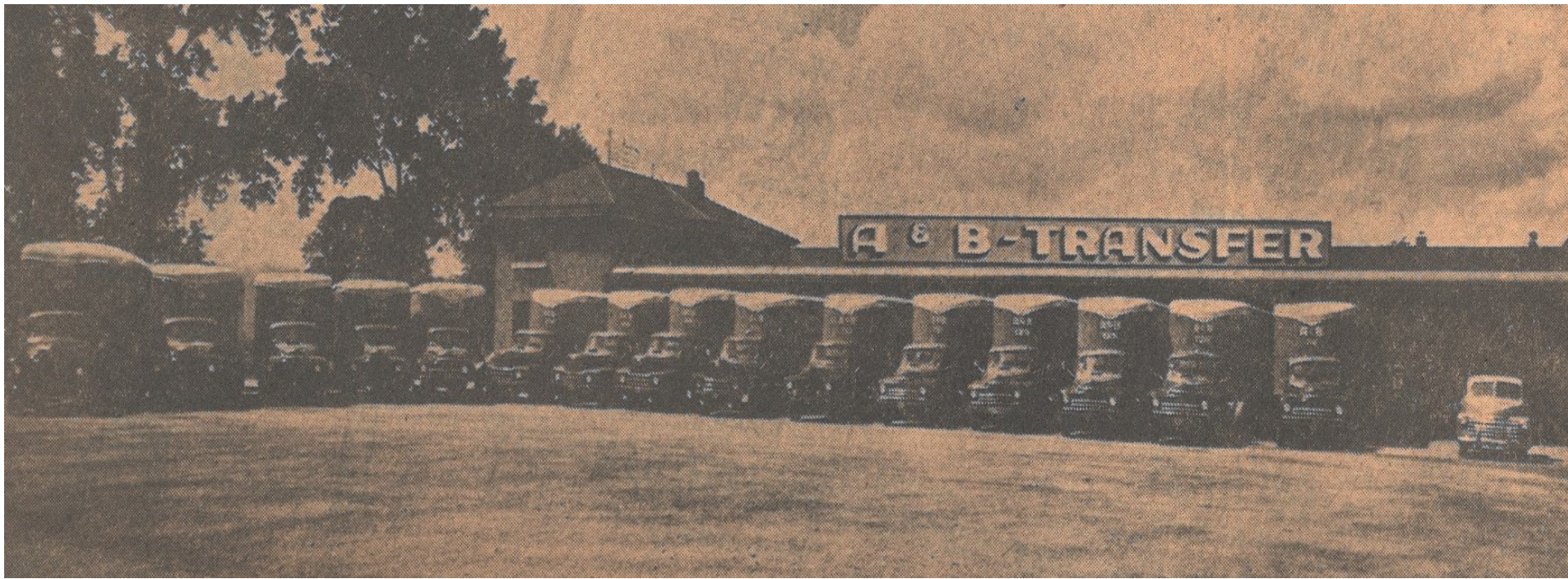
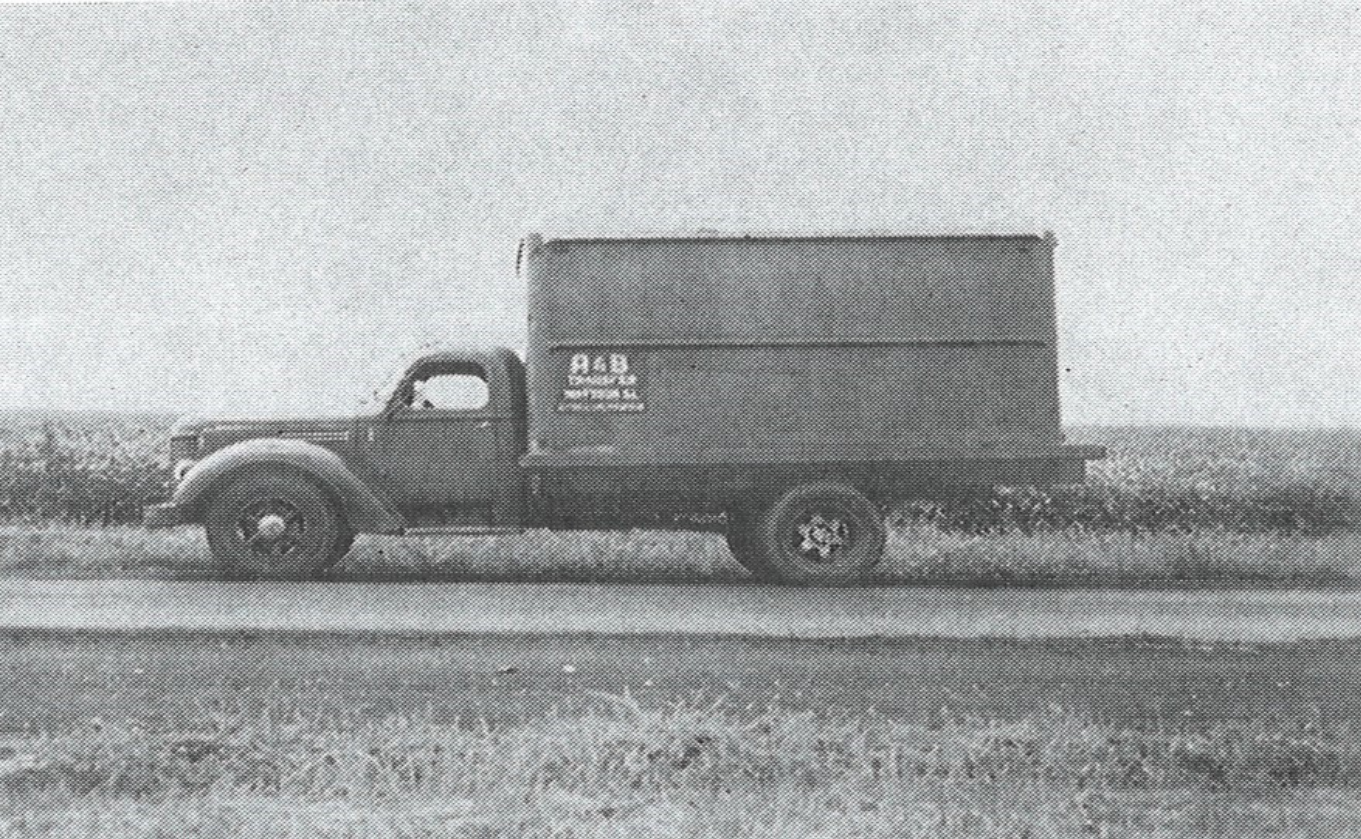


A & B TRANSFER INC.

By 1948 the firm had outgrown the terminal on Commercial Avenue and moved to a larger facility at 1901 Wabash Avenue.

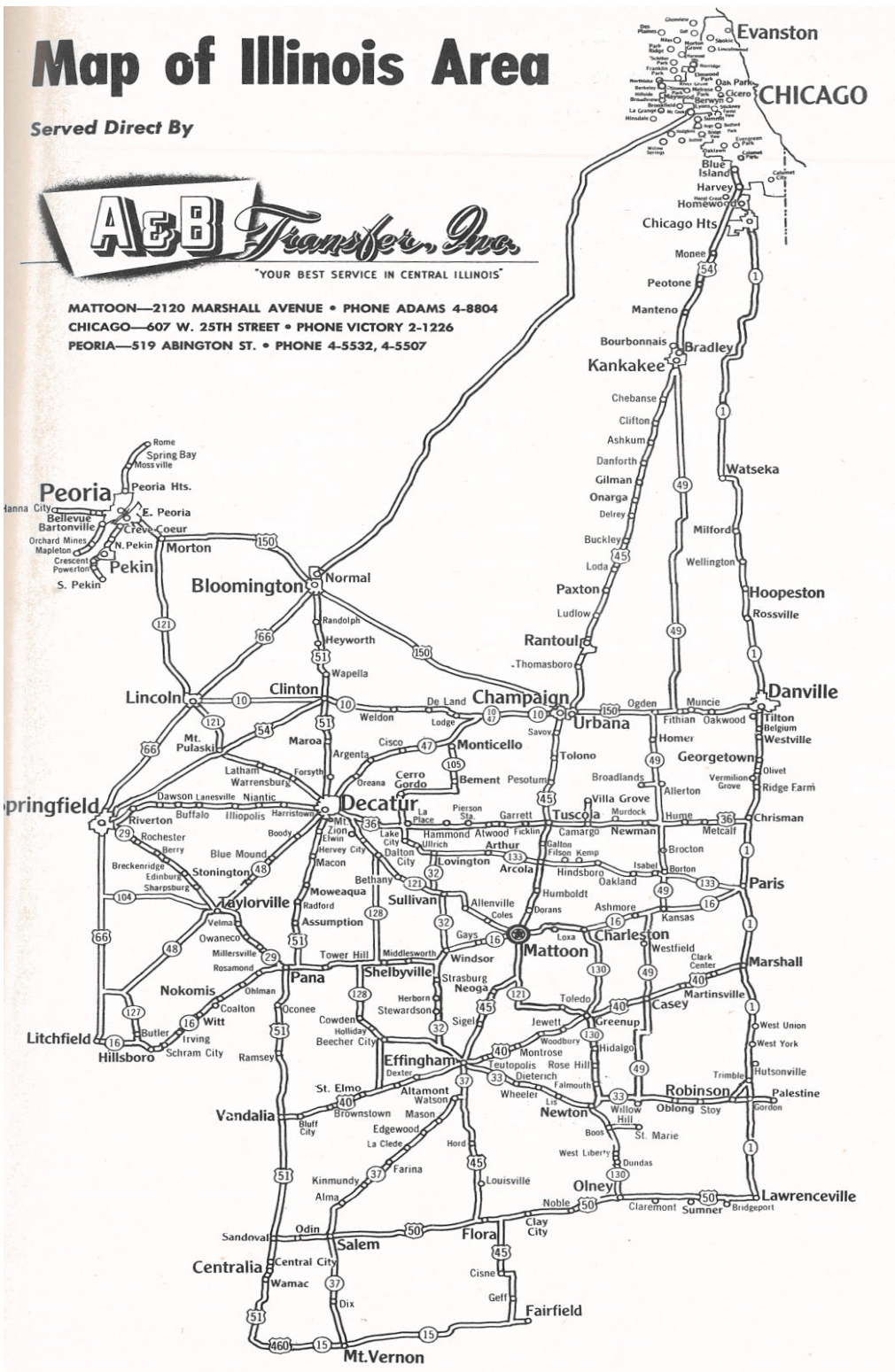
A & B Transfer was started in 1946 by Russ Alfred and his son-in-law Doug Byars. They started with 3 trucks in a terminal at 2217 Commercial Avenue.



By 1951 A&B had grown again to a size that they needed more space. They moved to 2120 Marshall Avenue into the former Yellow Freight terminal.



By 1964 A & B was offering daily service to 300 communities with terminals in Chicago, Peoria and Bloomington. A & B was listed in 1964 as the leading Class I Intrastate carrier in Illinois.



When A & B Transfer was sold in 1969 to Transport Motor Express, they were operating 75 semi-tractors, 150 trailers and 75 straight city trucks. Transport Motor Express continued to operate out of the A & B terminal at 2120 Marshall until 1980 when the company ceased operations.